

ROWAN UNIVERSITY HENRY M. ROWAN COLLEGE OF ENGINEERING

Steven Chin, Ph.D., P.E.
Vice Dean of Engineering

engineering@rowan.edu

856-256-5300

WHAT IS ENGINEERING

- **ADVANCEMENT OF TECHNOLOGY**
- **PROBLEM SOLVING**
- **MEETING THE CHALLENGES OF BOTH BASIC & FUTURE NEEDS**

RANKINGS



ROWAN ENGINEERING TOUR



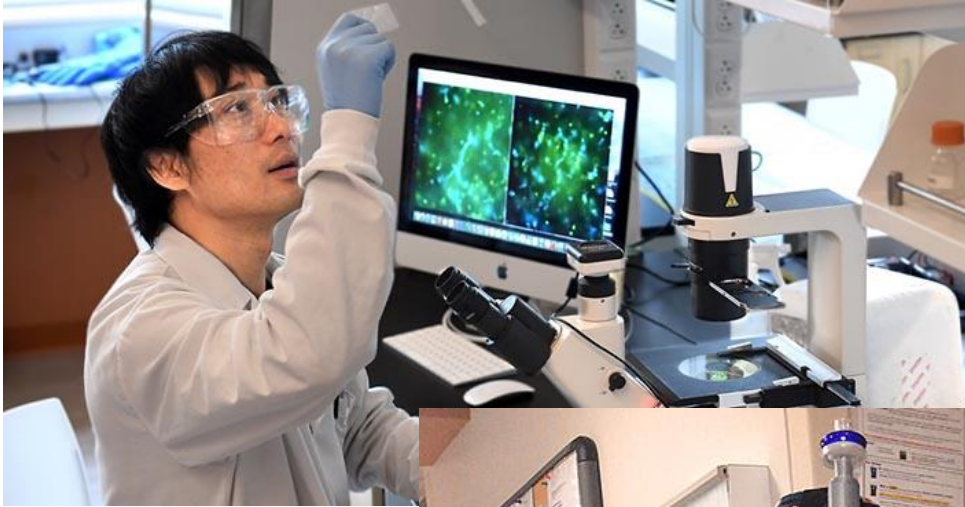
RU ENGINEERING BY THE NUMBERS

- **UNDERGRADUATE ENROLLMENT: 1573**
- **22:1 STUDENT TO FACULTY RATIO**
- **\$15K, AVERAGE COST OF ATTENDANCE FOR NJ STUDENTS**
- **1ST YEAR TO 2ND YEAR RETENTION RATE: 91.75%**
- **GRADUATION RATE: 85%**
- **CAREER PLACEMENT: OVER 90% (5 YEAR AVERAGE)**

ENGINEERING ENTREPRENEURSHIP



BIOMEDICAL ENGINEERING



CHEMICAL ENGINEERING



CIVIL & ENVIRONMENTAL ENGINEERING



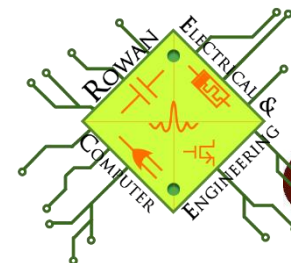
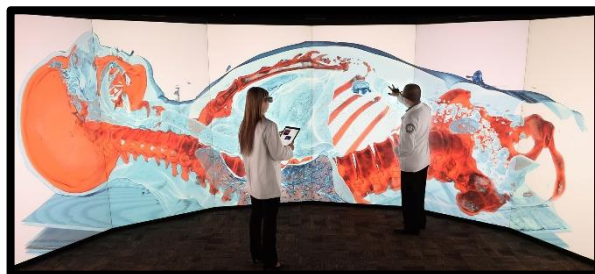
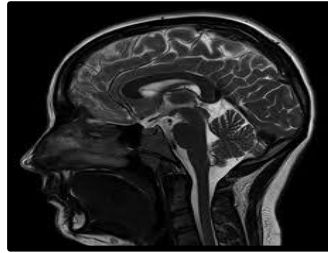
ELECTRICAL & COMPUTER ENGINEERING

FUTURE IS WHAT WE DO

U.S. NEWS &
WORLD REPORT

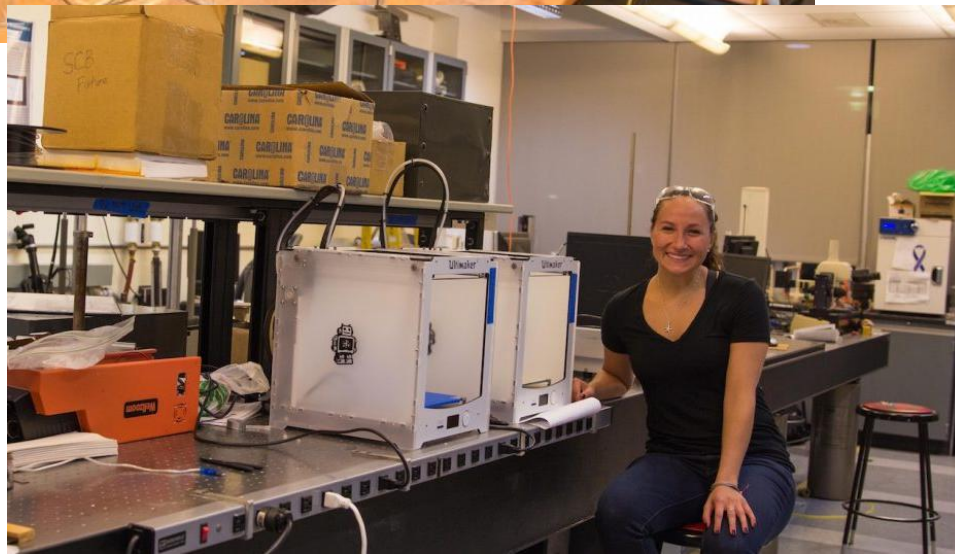
#16 ELECTRICAL
ENGINEERING

BEST COLLEGES
2021



Rowan University
College of Engineering

Mechanical Engineering



U.S. NEWS &
WORLD REPORT

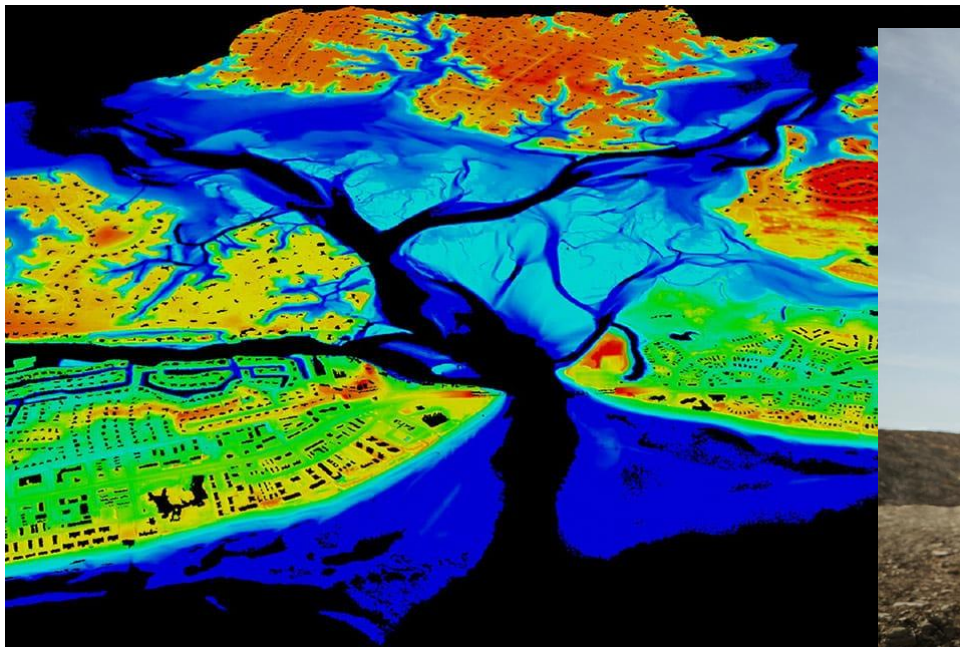
#13 MECHANICAL
ENGINEERING

BEST COLLEGES
2021

Land Surveying Engineering Technology

Electrical Engineering Technology

Mechanical Engineering Technology



ROWAN UNIVERSITY

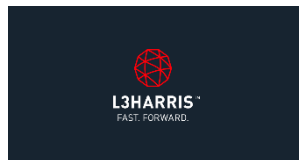
A “TOP 100” PUBLIC UNIVERSITY



Career Opportunities



An Exelon Company



POINTS OF CONTACT & SOCIAL MEDIA

- PHONE: 856-256-5300
- Website: engineering.rowan.edu
- Email: engineering@rowan.edu
- Twitter: @Rowan RCE
- Facebook: [facebook.com/RowanRCE](https://www.facebook.com/RowanRCE)
- Instagram: @rowanengineering